



India Meteorological Department

(Ministry of Earth Sciences)

NATIONAL BULLETIN NO.: 10 (BOB/03/2023)

TIME OF ISSUE: 0100 HOURS IST

DATED: 03.08.2023

FROM: INDIA METEOROLOGICAL DEPARTMENT (FAX NO. 24643965/24699216/24623220)

TO: CONTROL ROOM, NDM, MINISTRY OF HOME AFFAIRS (FAX.NO. 23093750)

CONTROL ROOM NDMA (FAX.NO. 26701729)

CABINET SECRETARIAT (FAX.NO.23012284, 23018638)

PS TO HON'BLE MINISTER FOR S & T AND EARTH SCIENCES (FAX NO.23316745)

SECRETARY, MOES (FAX NO. 24629777)

H.Q. (INTEGRATED DEFENCE STAFF AND CDS) (FAX NO. 23005137/23005147)

DIRECTOR GENERAL, DOORDARSHAN (23385843)

DIRECTOR GENERAL, AIR (23421105, 23421219)

PIB MOES (FAX NO. 23389042)

UNI (FAX NO. 23355841)

D.G. NATIONAL DISASTER RESPONSE FORCE (NDRF) (FAX NO. 26105912, 2436 3260)

DIRECTOR, PUNCTUALITY, INDIAN RAILWAYS (FAX NO. 23388503)

CHIEF SECRETARY, MADHYA PRADESH (FAX NO. 0755-2441076)

CHIEF SECRETARY, UTTAR PRADESH (FAX NO. 0522-2289212)

CHIEF SECRETARY, CHHATTISGARH (FAX NO. 0771-2221206)

CHIEF SECRETARY, JHARKHAND (FAX NO. 0651-2400255)

CHIEF SECRETARY, ODISHA (FAX NO. 0674-2536660)

Sub: Depression over Jharkhand & adjoining north Chhattisgarh

The Depression over Jharkhand moved westwards with a speed of 17 kmph during past 6 hours and lay centred at 2330 hours IST of 02nd August, 2023 over Jharkhand and adjoining north Chhattisgarh near latitude 23.3°N and longitude 84.1°E, about 95 km east-northeast of Ambikapur (Chhattisgarh) and 125 km west-southwest of Ranchi (Jharkhand).

It is likely to maintain the intensity of depression till 3rd August noon and weaken into a Well Marked Low Pressure Area thereafter. It is likely to move west-northwestwards towards northeast Madhya Pradesh and adjoining southeast Uttar Pradesh across north Chhattisgarh during next 12 hours.

Forecast track and intensity are given in the following table:

Date/Time(IST)	Position (Lat. °N/ long. °E)	Maximum sustained surface wind speed (Kmph)	Category of cyclonic disturbance
02.08.23/2330	23.3/84.1	45-55 gusting to 65	Depression
03.08.23/0530	23.4/83.0	40-50 gusting to 60	Depression
03.08.23/1130	23.5/81.9	35-45 gusting to 55	Depression
03.08.23/1130	23.6/80.8	30-40 gusting to 50	Well Marked Low Pressure Area

Warnings:

(i) Rainfall warning

East Madhya Pradesh: Light to moderate rainfall at most places with heavy to very heavy rainfall at a few places on 3rd & 4th and isolated extremely heavy rainfall on 3rd August. Heavy rainfall at isolated places is likely on 5th August.

Spatial rainfall distribution: Isolated: <25%, A few: 26-50%, Many: 51-75%, Most: 76-100%

Rainfall amount (mm): Heavy rain: 64.5 – 115.5, Very heavy rain: 115.6 – 204.4, Extremely heavy rain: 204.5 or more.

West Madhya Pradesh: Light to moderate rainfall at most places with heavy to extremely heavy rainfall at isolated places on 3rd August. Heavy rainfall at isolated places is likely on 4th August.

East Uttar Pradesh: Light to moderate rainfall at most places with isolated heavy to very heavy rainfall on 3rd August and isolated heavy rainfall during 4th to 6th August.

West Uttar Pradesh: Light to moderate rainfall at most places with isolated heavy rainfall on 3rd August.

Interior Odisha: Light to moderate rainfall at most places with isolated heavy rainfall on 3rd August.

Chhattisgarh: Light to moderate rainfall at most places with isolated heavy to very heavy rainfall over Chhattisgarh on 3rd and heavy rainfall at isolated places on 4th August.

(v) Damage Expected over Jharkhand, north interior Odisha, north Chhattisgarh, east Madhya Pradesh and east Uttar Pradesh

- Minor damage to loose / unsecured structures.
- Some breaches in Kutcha road due to flooding.
- Damage to standing agriculture & horticulture crops.
- Minor damage to Kutcha embankments.

The next bulletin will be issued at 0830 hrs IST of 3rd August, 2023.

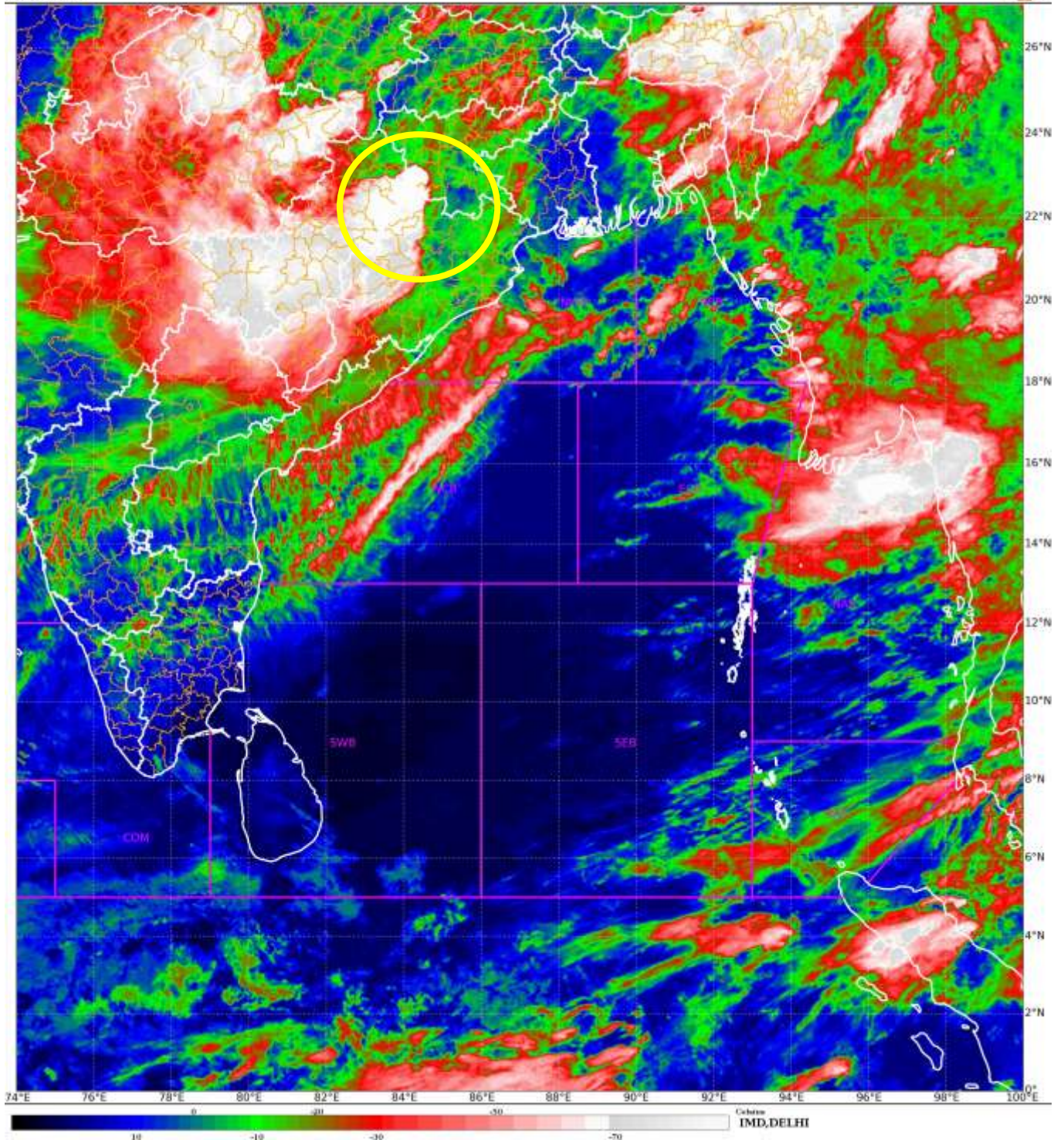
(S. P. Singh)
Scientist-C, RSMC, New Delhi

Copy to: CRS, Pune/ACWC Kolkata/Chennai/CWC Bhubaneswar/CWC Visakhapatnam/MO Port Blair

Depression (23.3°N, 84.1°E)

SAT : INSAT-3DR IMG
IMG_TIR1_TEMP 10.8 um
LIC Mercator

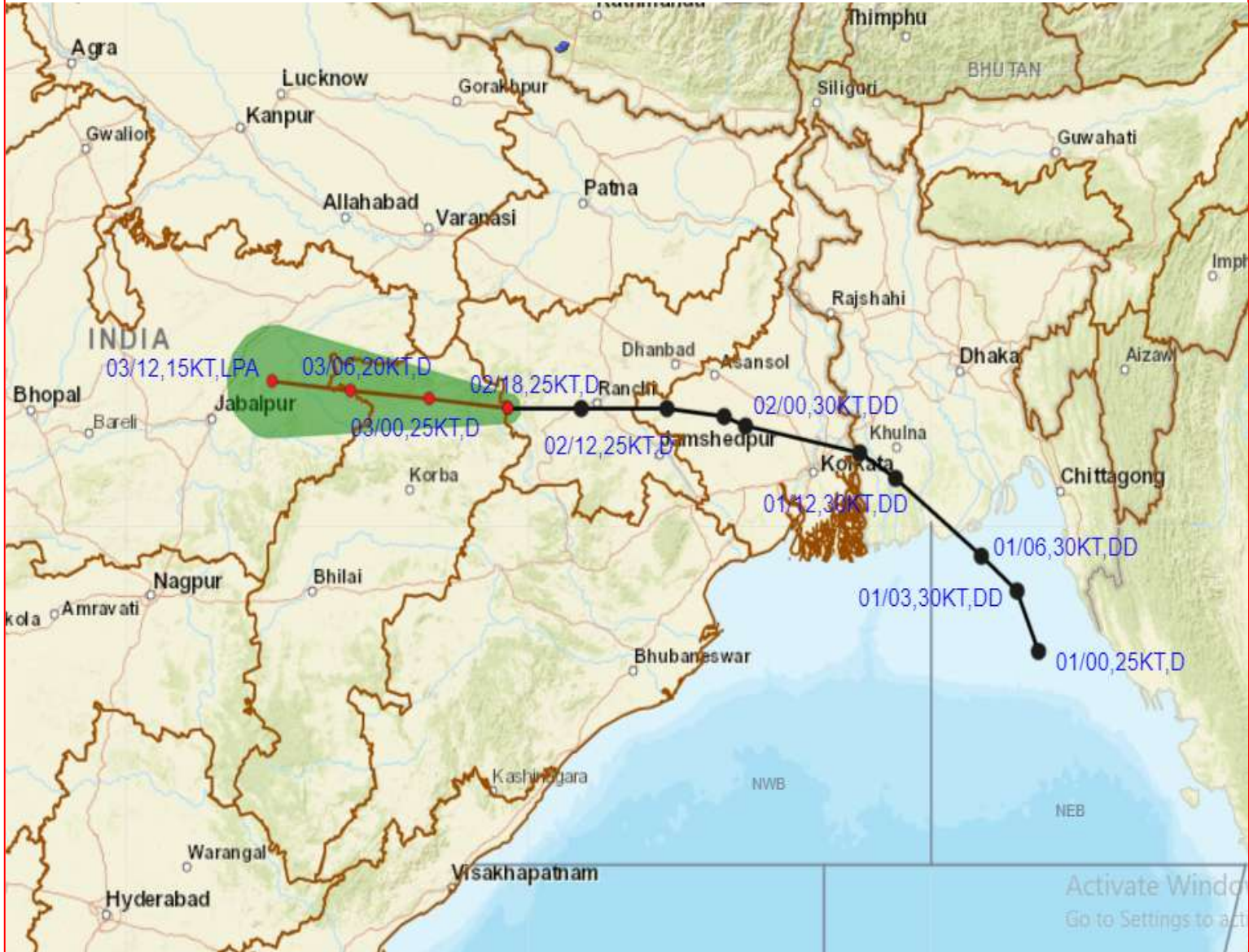
02-08-2023/(1745 to 1812) GMT
02-08-2023/(2315 to 2342) IST



Spatial rainfall distribution: Isolated: <25%, A few: 26-50%, Many: 51-75%, Most: 76-100%
Rainfall amount (mm): Heavy rain: 64.5 – 115.5, Very heavy rain: 115.6 – 204.4, Extremely heavy rain: 204.5 or more.



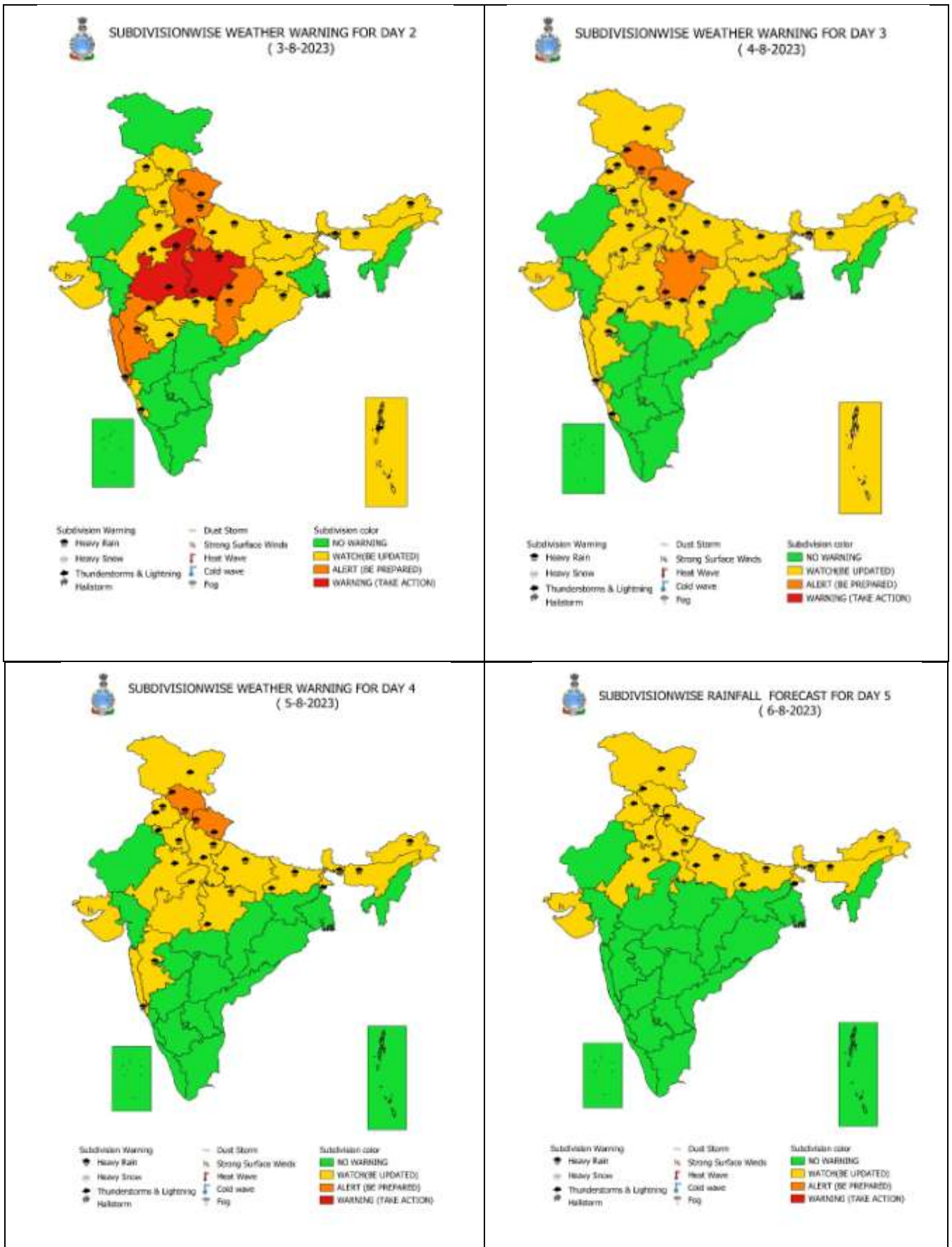
OBSERVED AND FORECAST TRACK OF DEPRESSION OVER JHARKHAND ADJOINING NORTH CHHATTISGARH BASED ON 1800 UTC (2330 IST) OF 02ND AUGUST 2023.



DATE/TIME IN UTC
 IST=UTC + 0530
 L: LOW PRESSURE AREA
 WML: WELL MARKED LOW PRESSURE AREA
 D: DEPRESSION (17-27 KT)
 DD: DEEP DEPRESSION (28-33 KT)
 CS: CYCLONIC STORM (34-47 KT)
 SCS: SEVERE CYCLONIC STORM (48-63KT)
 VSCS: VERY SEVERE CYCLONIC STORM (64-89 KT)
 ESCS: EXTREMELY SEVERE CYCLONIC STORM (90-119 KT)
 SuCS: SUPER CYCLONIC STORM (\geq 120 KT)

-  LESS THAN 34 KT
-  34-47 KT
-  \geq 48 KT
-  OBSERVED TRACK
-  FORECAST TRACK
-  CONE OF UNCERTAINTY

Weather Warning Graphics



WARNING

WARNING (TAKE ACTION)
ALERT (BE PREPARED)
WATCH (BE UPDATED)
NO WARNING (NO ACTION)

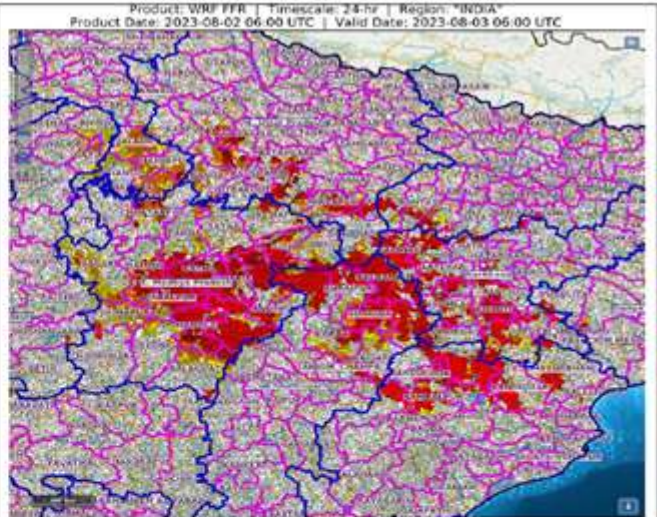
Spatial rainfall distribution: Isolated: <25%, A few: 26-50%, Many: 51-75%, Most: 76-100%
Rainfall amount (mm): Heavy rain: 64.5 – 115.5, Very heavy rain: 115.6 – 204.4, Extremely heavy rain: 204.5 or more.

Flash Flood Guidance

24 hours Outlook for the Flash Flood Risk (FFR) till 1130 IST of 03-08-2023 :

Moderate flash flood risk likely over few watersheds & neighbourhoods of East Uttar Pradesh, South-Eastern part of West Uttar Pradesh, North Chhattisgarh, East Madhya Pradesh, North-West Odisha and adjoining Jharkhand Met Sub-divisions during next 24 hours.

Surface runoff/ Inundation may occur at some fully saturated soils & low-lying areas over AoC as shown in map due to expected rainfall occurrence in next 24 hours.



Flash Flood Risk

High Risk (Take Action)

Moderate Risk (Be Prepared)

Low Risk (Be Updated)

Spatial rainfall distribution: Isolated: <25%, A few: 26-50%, Many: 51-75%, Most: 76-100%
Rainfall amount (mm): Heavy rain: 64.5 – 115.5, Very heavy rain: 115.6 – 204.4, Extremely heavy rain: 204.5 or more.